



Hind Offshore

Serving the offshore Oil & Gas industry since 1990

Pedestal Mounted, 360° Fully Revolving, Dynamic Offshore Crane For Accommodation Work Barge Sea Aaryan

TechCrane L500-160

- 250 MT SWL
- ABS Approved
- API-2C 6th Edition Compliant
- Man-Riding



AMERICAN PETROLEUM INSTITUTE



Pedestal Mounted, 360° Fully Revolving, Dynamic Offshore Crane

Principal Particulars

Built & Classification	
Built Year / Builder	Brand new, 2013
Country of Manufacture	Built in United States of America
Manufacturer	TechCrane International LLC, USA
Classification	1. American Bureau of Shipping Class approved for type, design and construction 2. Fully API 2C compliant 3. Man-riding compliant
Model No.	L500-160
Serial No.	L500160T1008

Capacities		
Lifting Capacity	147 tons @ 32.15 ft - (9.8 mtr)	
	23 tons @ 167 ft - (50.9 mtr)	
Maximum Boom Point Elevation	147.6 ft - (45 mtrs)	
Maximum Radius	167 ft - (50.9 mtrs)	
Engine	Cummins	
Design Life	Min. 25 Years	As per API-2C

Dimensions & Load Chart

Dimensions		
Overall Height	47.8 ft - (14.57m)	Excluding pedestal
Overall Length	192 ft - (58.522m)	
Boom Length	160 ft - (48.768m)	Can be extended
Boom Type	Open Throat Lattice Boom	High tensile strength

Load Line Chart (Please Refer Full Load & Curve Chart)		
Radius ft / m	Boom Angle (deg.)	S.W.Load (Kgs.)
32.15 ft - (9.8 m)	81.0	147,077.0
75.13 ft - (22.9m)	64.8	87,489.8
109.9 ft - (33.5m)	49.9	55,679.0
149.93 ft - (45.7m)	26.7	37,632.7
167 ft - (50.9m)	0.5	23,958.1

Boom Hoists & Other Features

Boom Hoist		
Make	Lantec Model LWD850	Dual Drive Winch
Line Pull	44,000 Lbs	On the top layer
Reeved with	840 Ft of 1¼" Wire rope	Boom Luffing
	Approx. 0.15 degrees per second	Under full load
	Approx. 0.3 degrees per second	With approx. 50% of rated load
Max. Boom Angle	82 Degrees	

Main Hoist		
Make	Lantec Model 1600	Dual Drive Winch
Line Pull	50,000 Lbs	On the top layer
Wire Rope	2000 Ft 1½" Dyform 34 LR	
Hook Travel	180 ft / 55mtrs.	
Traveling Block Capacity	150 Ton	
Load Indicator	Electronic Load Indicator for Load Line	

Auxiliary Hoist		
Make	Lantec Model LHS 160	Dual Drive Winch
Line Pull	12,000 Lbs	On the top layer
Wire Rope	400 Ft 7/8" Dyform 18 LR	Single line
Aux. Block Capacity	10 Ton	

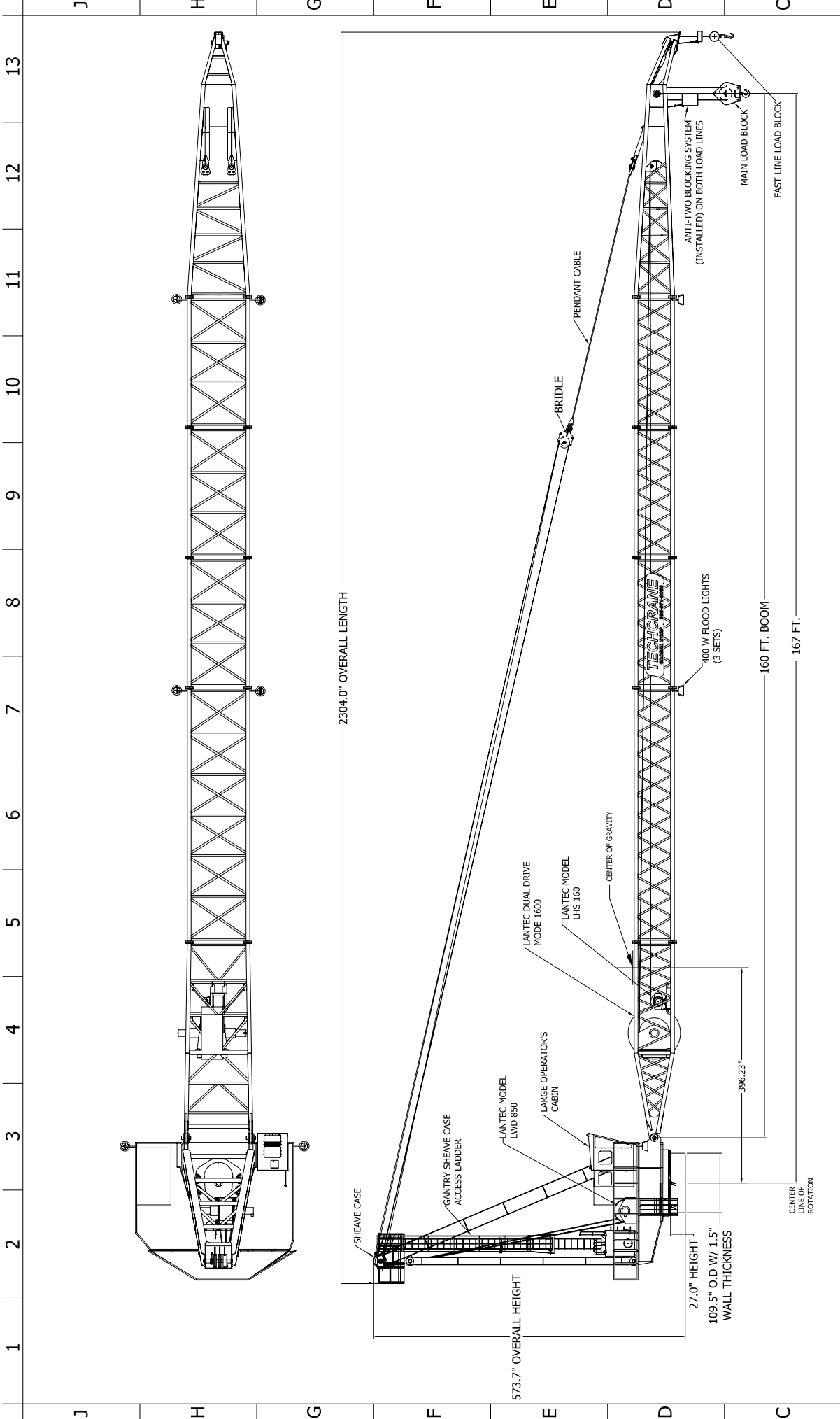
Rotation		
Rotation Direction	360 deg. continuous rotation in both directions via electric slip ring	
Roation speed	180 deg. / min continuous rotation in both directions under max. load	
Gear Boxes	4, Eskridge model 252	Swing gearboxes

Other Features		
Operator's Cabin	Ergonomic and Large with High Visibility	
Flood Lights	3 sets (Front, Middle of boom and Cabin)	400 W
Explosion Protection	Explosion Proof Sensors mounted on boom tip	
Simultaneous Operation	Capable of two functions at full load and speed	

Certification & Accreditation

ABS	American Bureau of Shipping
API 2C	American Petroleum Institute
USCG	United States Coast Guard
AISC	American Institute of Steel Construction

ASTM	American Society for Testing and Materials
AWS	American Welding Society
NEC	National Electrical Code, USA
OSHA	Occupational Safety and Health Administration



MATERIAL:		QTY:
TECHERANE UNLESS OTHERWISE SPECIFIED .X ±.03" .XX ±.015" .XXX ±.0015" .XXXX ±.0005" .X/X ±.1/32" DIMENSIONS IN INCHES [] INDICATES MILLIMETERS		
PHONE (985) 871-0056 Techerane International, LLC. 17639 HARD HAT DR. COVINGTON, LA. 70435 USA HIND OFFSHORE PVT. LTD. L500-160 GENERAL ARRANGEMENT		
DRAWN BY:	N. Polasa	DATE: 04/30/2013
DESIGN. BY:	F. Shad	SCALE: None
APP'D BY:		SHT: 1 of 2.0
PART NO:	L500-160 (General Arrangement)	
FILE NAME:	L500-160 (General Arrangement)	
INFO:	INFORMATION CONTAINED HEREON IS CONFIDENTIAL AND TRADE SECRET. DO NOT DISCLOSE, USE OR REPRODUCE WITHOUT PRIOR WRITTEN APPROVAL FROM TECHERANE GLOBAL CORPORATION	

1	2	3	4	5	6	7	8	9	10	11	12	13
J	H	G	F	E	D	C	B	A				

L500-160

Radius (m.)	Boom Angle (deg.)	S.W. Load (kgs.)
9.8	81.0	147077.0
10.7	79.9	142425.4
12.2	78.0	135679.0
13.7	76.3	129927.4
15.2	74.4	124947.8
16.8	72.5	120581.1
18.3	70.7	112043.9
19.8	68.7	102940.2
21.3	75.8	94658.9
22.9	64.8	87489.8
24.4	62.9	81225.6
25.9	60.8	75703.5
27.4	58.8	70800.2
29.0	56.6	75417.5
30.5	54.5	62476.2
32.0	52.2	58914.1
33.5	49.9	55679.0
35.1	47.5	52727.9
36.6	45.1	50024.9
38.1	42.5	47540.6
39.6	39.8	45249.5
41.2	36.9	43130.3
42.7	33.8	41164.4
44.2	30.4	39336.8
45.7	26.7	37632.7
47.2	22.3	35569.7
48.8	17.0	32353.7
50.3	9.1	28076.3
50.9	0.5	23958.1



17639 Hard Hat Dr. Covington, LA 70435 B: 985.871.0056 F: 985.871.0056
sales@techcrane.com www.techcrane.com FB:TECHCRANE

API 2C MAN-RIDING or PERSONNEL RATED CRANE COMPLIANCE CERTIFICATE

The crane identified herein as L500-160 serial number L500160T1008 is qualified for personnel handling per API 2C Rules. The crane must be certified periodically with its annual and semi annual maintenance per the attached rules. By rule, the crane is qualified for personnel handling by its winches, wire rope breaking strength, and structure compliance as per the rules defined by Specification API 2C.