



1100 SERIES MODEL 11320 CRAWLER CRANE

LIFT RATINGS With 94H Tubular Chord Boom and "A-B-C-D" Counterweight (230,000 lbs.) (104,320 kg.) METRIC

Boom Length (Feet)	Radius In Feet	Boom Angle Degrees	Lift Rating (Pounds)	Feet From Boom Point To Ground
70 feet	17	82.2	800000	76
	20	79.7	758510	76
	25	75.4	574380	75
	30	71.1	445090	73
	35	66.7	348650	71
	40	62.1	285750	69
	50	52.2	208680	62
	70	40.7	163300	53
70	24.9	123670	37	
80 feet	19	81.7	800000	86
	20	81.0	754160	86
	25	77.3	563970	85
	30	73.6	444770	84
	35	69.8	349270	82
	40	65.9	285330	80
	50	57.7	208170	75
	60	48.6	162770	67
70	37.8	132860	56	
80	23.2	104300	39	
90 feet	20	82.0	732980	96
	25	78.7	549760	95
	30	75.5	438740	94
	35	72.1	347930	93
	40	68.7	284950	91
	50	61.7	207750	86
	60	54.0	162340	80
	70	45.6	132440	71
80	35.6	111120	59	
90	21.8	90660	41	
100 feet	21	82.2	670810	106
	25	79.9	535700	106
	30	76.9	429090	105
	35	74.0	347410	103
	40	71.0	284390	102
	50	64.7	207130	98
	60	58.1	161700	92
	70	51.0	131610	85
80	43.1	110450	75	
90	33.6	94690	63	
100	20.6	77910	42	
110 feet	23	81.9	580650	116
	25	80.8	522470	116
	30	78.2	418790	115
	35	75.5	346930	114
	40	72.8	283880	112
	50	67.2	206580	109
	60	61.3	161140	104
	70	55.2	131260	97
80	48.5	109880	89	
90	40.9	94140	79	
100	32.0	81780	65	
110	19.6	67540	44	
120 feet	24	82.1	540090	126
	25	81.6	514170	126
	30	79.7	412630	125
	35	76.7	344860	124
	40	74.2	284200	123
	50	69.2	207040	119
	60	63.9	161630	115
	70	58.5	131780	109

Boom Length (Meters)	Radius Meters	Boom Angle Degrees	Lift Rating (Kilograms)	Meters From Boom Point To Ground
21.3 meters	5.2	82.2	408240	23.2
	6.1	79.7	344660	23.2
	7.6	75.4	286540	22.9
	9.1	71.1	201890	22.3
	10.7	66.7	158150	21.6
	12.2	62.1	129820	21.0
	15.2	52.2	94660	18.9
	21.3	40.7	74070	16.2
21.3	24.9	56100	11.3	
24.4 meters	5.8	81.7	362880	26.2
	6.1	81.0	342090	26.2
	7.6	77.3	255820	25.9
	9.1	73.6	201750	25.6
	10.7	69.8	157880	25.0
	12.2	65.9	129430	24.4
	15.2	57.7	94430	22.9
	18.3	48.6	73830	20.4
21.3	37.8	60270	17.1	
24.4	23.2	47310	11.9	
27.4 meters	6.1	82.0	332480	29.3
	7.6	78.7	249370	29.0
	9.1	75.5	199470	28.7
	10.7	72.1	157820	28.3
	12.2	68.7	129250	27.7
	15.2	61.7	94240	26.2
	18.3	54.0	73640	24.4
	21.3	45.6	60070	21.6
24.4	35.6	50400	18.0	
27.4	21.8	41120	12.5	
30.5 meters	6.4	82.2	304280	32.3
	7.6	79.9	242990	32.3
	9.1	76.9	194840	32.0
	10.7	74.0	157590	31.4
	12.2	71.0	129000	31.1
	15.2	64.7	93950	29.9
	18.3	58.1	73350	28.0
	21.3	51.0	59790	25.9
24.4	43.1	50100	22.9	
27.4	33.6	42950	19.2	
30.5	20.6	35340	12.8	
33.5 meters	7.0	81.9	263380	35.4
	7.6	80.8	236990	35.4
	9.1	78.2	189960	35.1
	10.7	75.5	157370	34.7
	12.2	72.8	128770	34.1
	15.2	67.2	93700	33.2
	18.3	61.3	73090	31.7
	21.3	55.2	59540	29.6
24.4	48.5	49640	27.1	
27.4	40.9	42700	24.1	
30.5	32.0	37100	19.8	
33.5	19.6	30640	13.4	
36.6 meters	7.3	82.1	244980	38.4
	7.6	81.6	233200	38.4
	9.1	79.7	187260	38.1
	10.7	76.7	156430	37.8
	12.2	74.2	128850	37.5
	15.2	69.2	93910	36.3
	18.3	63.9	73320	35.1
	21.3	58.5	59780	33.2

Shaded ratings are limited by strength of materials, or factors other than stability.

(continued)

FORM NO. 11320-CR-5

LIFT RATINGS (cont.)

With 94H Tubular Chord Boom

Boom Length (Feet)	Radius in Feet	Boom Angle Degrees	Lift Rating (Pounds)	Feet From Boom Point To Ground
120 feet cont.	80	52.6	110410	103
	90	46.2	94720	94
	100	39.1	82360	83
	110	30.6	72520	68
	120	18.7	60540	46
130 feet	25	82.2	503100	136
	30	80.0	403680	135
	35	77.8	337160	134
	40	75.5	287350	133
	50	70.9	206440	130
	60	66.1	161010	126
	70	61.1	131160	121
	80	55.9	109780	115
	90	50.4	94100	107
	100	44.3	81740	98
	110	37.5	71880	86
	120	29.3	63840	71
	130	18.0	52930	47
140 feet	27	82.0	448870	146
	30	80.7	395790	145
	35	78.6	333090	144
	40	76.5	283240	143
	50	72.3	205890	141
	60	67.9	160450	137
	70	63.4	130600	132
	80	58.7	109200	127
	90	53.7	93550	120
	100	48.4	81180	112
	110	42.6	71310	102
	120	36.0	63270	90
	130	28.2	56590	73
140	17.3	47780	49	
150 feet	28	82.1	420680	156
	30	81.3	38020	155
	35	79.4	323320	155
	40	77.5	277850	154
	50	73.5	205240	151
	60	69.5	159780	148
	70	65.3	129940	143
	80	61.0	108500	138
	90	56.5	92880	132
	100	51.7	80490	125
	110	46.6	70610	116
	120	41.1	62360	106
	130	34.8	55870	93
140	27.2	50240	76	
150	16.7	41630	50	
160 feet	29	82.3	397290	166
	30	81.9	381020	166
	35	80.1	317140	165
	40	78.3	272320	164
	50	74.6	204630	161
	60	70.8	159160	158
	70	66.9	129320	154
	80	63.0	107870	150
	90	58.8	92260	144
	100	54.5	79870	137
	110	50.0	69980	130
	120	45.1	61920	120
	130	39.7	55220	109
140	33.6	49580	96	
150	26.3	44960	78	
160	16.1	36280	52	
170 feet	31	82.0	362810	176
	35	80.7	312590	175
	40	79.0	268330	174
	50	75.5	204630	172
	60	72.0	159200	169
	70	68.4	129410	165
	80	64.7	107360	161
	90	60.9	92390	156
	100	56.9	80000	150
	110	52.8	70120	143
	120	48.4	62060	134
	130	43.6	55360	124
	140	38.4	49720	113
150	32.6	45150	99	
160	25.5	40940	80	
170	15.6	32730	53	
180 feet	32	82.2	343380	185
	35	81.2	309430	185
	40	79.6	263430	184
	50	76.3	204040	182
	60	73.0	158590	179
	70	69.6	128790	176

METRIC

Boom Length (Meters)	Radius in Meters	Boom Angle Degrees	Lift Rating (Kilograms)	Meters From Boom Point To Ground
36.6 meters cont.	24.4	52.6	50080	31.4
	27.4	46.2	42960	28.7
	30.5	39.1	37360	25.3
	33.5	30.6	32900	20.7
	36.6	18.7	27460	14.0
38.6 meters	7.6	82.2	228210	41.5
	9.1	80.0	183110	41.1
	10.7	77.8	152940	40.8
	12.2	75.5	128710	40.5
	15.2	70.9	93640	39.6
	18.3	66.1	73030	38.4
	21.3	61.1	59490	36.9
	24.4	55.9	49600	35.1
	27.4	50.4	42880	32.6
	30.5	44.3	37080	29.9
	33.5	37.5	32600	26.2
	36.6	29.3	28960	21.6
	39.6	18.0	24010	14.3
42.7 meters	8.2	82.0	203610	44.5
	9.1	80.7	179530	44.2
	10.7	78.6	149730	43.6
	12.2	76.5	128480	43.6
	15.2	72.3	93390	43.0
	18.3	67.9	72780	41.8
	21.3	63.4	59240	40.2
	24.4	58.7	49530	38.7
	27.4	53.7	42430	36.6
	30.5	48.4	36820	34.1
	33.5	42.6	32350	31.1
	36.6	36.0	28700	27.4
	39.6	28.2	25670	22.3
42.7	17.3	21670	14.9	
45.7 meters	8.5	82.1	190820	47.5
	9.1	81.3	176100	47.2
	10.7	79.4	146660	47.2
	12.2	77.5	126030	46.9
	15.2	73.5	93100	46.0
	18.3	69.5	72480	45.1
	21.3	65.3	58940	43.6
	24.4	61.0	49220	42.1
	27.4	56.5	42130	40.2
	30.5	51.7	36510	38.1
	33.5	46.6	32030	35.4
	36.6	41.1	28380	32.3
	39.6	34.8	25340	28.3
42.7	27.2	22790	23.2	
45.7	16.7	18880	15.2	
48.8 meters	8.8	82.3	180210	50.6
	9.1	81.9	172830	50.6
	10.7	80.1	143850	50.3
	12.2	78.3	123520	50.0
	15.2	74.6	92820	49.1
	18.3	70.8	72190	48.2
	21.3	66.9	58660	46.9
	24.4	63.0	48930	45.7
	27.4	58.8	41850	43.9
	30.5	54.5	36230	41.8
	33.5	50.0	31740	39.6
	36.6	45.1	28090	36.6
	39.6	39.7	25050	33.2
42.7	33.6	22490	29.3	
45.7	26.3	20350	24.8	
48.8	16.1	16460	15.8	
51.8 meters	9.4	82.0	164570	53.6
	10.7	80.7	141790	53.3
	12.2	79.0	121710	53.0
	15.2	75.5	92820	52.4
	18.3	72.0	72210	51.5
	21.3	68.4	58770	50.3
	24.4	64.7	48970	49.1
	27.4	60.9	41810	47.5
	30.5	56.9	36290	45.7
	33.5	52.8	31810	43.6
	36.6	48.4	28150	40.8
	39.6	43.6	25100	37.8
	42.7	38.4	22550	34.4
45.7	32.6	20480	30.2	
48.8	25.5	18570	24.4	
51.8	15.6	14850	16.2	
54.9 meters	9.8	82.2	155760	56.4
	10.7	81.2	140360	56.4
	12.2	79.6	119490	56.1
	15.2	76.3	92550	55.5
	18.3	73.0	71940	54.6
	21.3	69.6	58420	53.6

(continued)

LIFT RATINGS (cont.)

With 94H Tubular Chord Boom

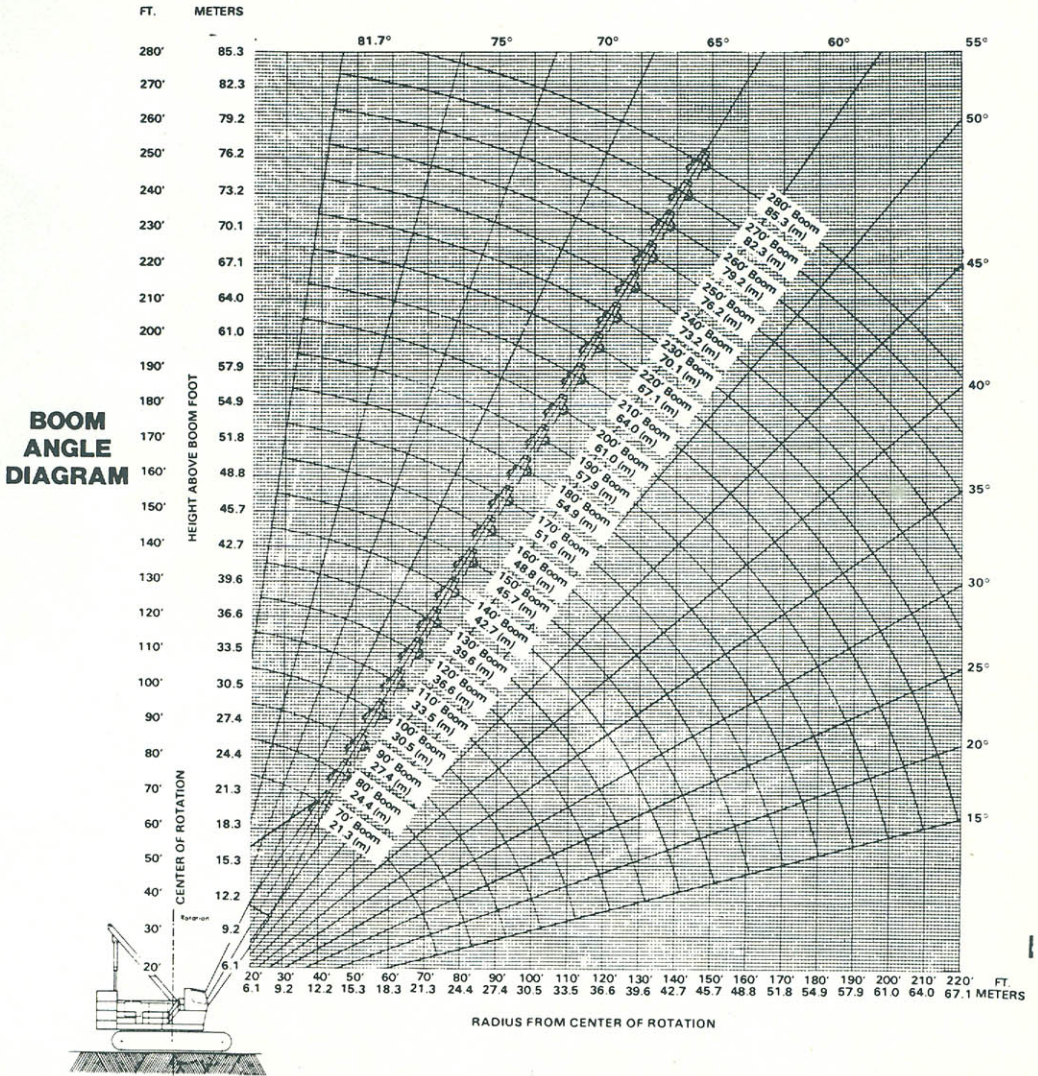
Boom Length (Feet)	Radius in Feet	Boom Angle Degrees	Lift Rating (Pounds)	Feet From Boom Point To Ground
180 feet cont.	80	66.2	107320	172
	90	62.6	91770	167
	100	59.0	79350	161
	110	55.2	69470	155
	120	51.2	61400	147
	130	46.9	54700	139
	140	42.3	49390	128
	150	37.3	44520	116
	160	31.6	40310	101
	170	24.7	36640	82
180	15.2	28340	54	
190 feet	33	82.3	325280	195
	35	81.7	304470	195
	40	80.1	258930	194
	50	77.0	202420	192
	60	73.9	159010	190
	70	70.8	128210	187
	80	67.5	106720	183
	90	64.2	91180	178
	100	60.8	78770	173
	110	57.2	68870	167
	120	53.6	60800	160
	130	49.7	54080	152
	140	45.6	48810	143
	150	41.1	43940	132
160	36.3	39730	120	
170	30.7	36040	104	
180	24.1	31950	85	
190	14.7	24410	55	
200 feet	35	82.1	299680	205
	40	80.6	256760	204
	50	77.7	198560	203
	60	74.8	151360	200
	70	71.8	121560	197
	80	68.7	105040	194
	90	65.6	90530	189
	100	62.4	78100	184
	110	59.1	68180	179
	120	55.7	60100	172
	130	52.1	53380	165
	140	48.3	48140	157
	150	44.3	43270	147
	160	40.0	39050	136
170	35.3	35370	123	
180	29.9	32120	107	
190	23.4	27470	87	
200	14.3	20670	57	
210 feet	36	82.2	285560	215
	40	81.1	252680	215
	50	78.3	195550	213
	60	75.5	156740	210
	70	72.7	126930	208
	80	69.8	105400	204
	90	66.8	89900	200
	100	63.8	77460	196
	110	60.7	67540	190
	120	57.5	59450	184
	130	54.2	52730	177
	140	50.7	47510	170
	150	47.1	42640	161
	160	43.2	38430	151
170	39.0	34740	139	
180	34.4	31490	126	
190	29.2	28610	110	
200	22.8	23460	89	
210	14.0	17300	58	
220 feet	37	82.3	272840	225
	40	81.5	249740	225
	50	78.8	193090	223
	60	76.2	154930	221
	70	73.5	126880	218
	80	70.7	105280	215
	90	67.9	89810	211
	100	65.1	77380	207
	110	62.2	67470	202
	120	59.2	59380	196
	130	56.1	52660	190
	140	52.8	47490	183
	150	49.5	42610	174
	160	45.9	38400	165
170	42.2	34710	155	
180	38.1	31460	143	
190	33.6	28580	129	
200	28.5	25390	112	
210	22.3	20710	91	
220	13.7	15100	59	

METRIC

Boom Length (Meters)	Radius in Meters	Boom Angle Degrees	Lift Rating (Kilograms)	Meters From Boom Point To Ground
54.9 meters	24.4	66.2	48680	52.4
	27.4	62.6	41630	50.9
	30.5	59.0	36900	49.1
	33.5	55.2	31510	47.2
	36.6	51.2	27850	44.8
	39.6	46.9	24810	42.4
	42.7	42.3	22400	39.0
	45.7	37.3	20190	35.4
	48.8	31.6	18280	30.8
	51.8	24.7	16620	25.0
54.9	15.2	12860	16.5	
57.9 meters	10.1	82.3	147550	59.4
	10.7	81.7	138110	59.4
	12.2	80.1	117450	59.1
	15.2	77.0	91820	58.5
	18.3	73.9	71670	57.9
	21.3	70.8	58160	57.0
	24.4	67.5	48410	55.8
	27.4	64.2	41360	54.3
	30.5	60.8	35730	52.7
	33.5	57.2	31240	50.9
	36.6	53.6	27580	48.6
	39.6	49.7	24530	46.3
	42.7	45.6	22140	43.6
	45.7	41.1	19930	40.2
48.8	36.3	18020	36.6	
51.8	30.7	16350	31.7	
54.9	24.1	14490	25.9	
57.9	14.7	11070	16.8	
61.0 meters	10.7	82.1	135930	62.5
	12.2	80.6	116470	62.2
	15.2	77.7	90070	61.9
	18.3	74.8	71390	61.0
	21.3	71.8	57890	60.0
	24.4	68.7	48100	59.1
	27.4	65.6	41060	57.6
	30.5	62.4	35430	56.1
	33.5	59.1	30530	54.6
	36.6	55.7	27360	52.4
	39.6	52.1	24210	50.3
	42.7	48.3	21840	47.9
	45.7	44.3	19630	44.8
	48.8	40.0	17710	41.5
51.8	35.3	16040	37.5	
54.9	29.9	14570	32.7	
57.9	23.4	12460	26.5	
61.0	14.3	9380	17.4	
64.0 meters	11.0	82.2	129530	65.5
	12.2	81.1	114620	65.5
	15.2	78.3	88700	64.9
	18.3	75.5	71100	64.0
	21.3	72.7	57580	63.4
	24.4	69.8	47810	62.2
	27.4	66.8	40790	61.0
	30.5	63.8	35140	59.7
	33.5	60.7	30640	57.9
	36.6	57.5	26970	56.1
	39.6	54.2	23920	53.9
	42.7	50.7	21550	51.8
	45.7	47.1	19340	49.1
	48.8	43.2	17430	46.0
51.8	39.0	15760	42.4	
54.9	34.4	14280	38.4	
57.9	29.2	12980	33.5	
61.0	22.8	10640	27.1	
64.0	14.0	7850	17.7	
67.1 meters	11.3	82.3	123760	68.6
	12.2	81.5	113280	68.6
	15.2	78.8	87590	68.0
	18.3	76.2	70390	67.4
	21.3	73.5	57520	66.4
	24.4	70.7	47760	65.5
	27.4	67.9	40740	64.3
	30.5	65.1	35100	63.1
	33.5	62.2	30600	61.6
	36.6	59.2	26930	59.7
	39.6	56.1	23890	57.9
	42.7	52.8	21540	55.8
	45.7	49.5	19330	53.0
	48.8	45.9	17420	50.3
51.8	42.2	15740	47.2	
54.9	38.1	14270	43.6	
57.9	33.6	12960	39.3	
61.0	28.5	11520	34.1	
64.0	22.3	9390	27.7	
67.1	13.7	6850	18.0	

(continued)

MODEL 11320 WORKING RANGES



6JR8210

FORM NO. 11320-CR-5

LOAD HOISTING DATA*

Maximum Lifting Capacity — Lbs.	Minimum Pts. of Line	Maximum Hoisting Distance Main CLL — Front
900,000	18	137'
800,000	16	154'
700,000	14	176'
600,000	12	205'
550,000	11	224'
500,000	10	246'
450,000	9	274'
400,000	8	308'
350,000	7	352'
300,000	6	411'
250,000	5	493'
200,000	4	616'
150,000	3	822'
100,000	2	1233'
50,000	1	2466'

*Based on 1-1/4 inch diameter rope with minimum breaking strength 175,000 lb.

Maximum Lifting Capacity — Kgs.	Minimum Pts. of Line	Maximum Hoisting Distance Main CLL — Front
408240	18	41.8
362880	16	46.9
317520	14	53.6
272160	12	62.5
249480	11	68.3
226800	10	75.0
204120	9	83.5
181440	8	93.9
158760	7	107.3
136080	6	125.3
113400	5	150.3
90720	4	187.8
68040	3	250.5
45360	2	375.8
22680	1	751.6

*Based on 32 mm diameter rope with minimum breaking strength 79,380 kg.

BOOM AND JIB ERECTION

Boom Length	No. 75H Jib Length
280'	0'
250'	40'
240'	60'
230'	90'
220'	110'

Boom Length	No. 75H Jib Length
85.3 m	0 m
76.2 m	12.2 m
73.2 m	18.3 m
70.1 m	27.4 m
67.1 m	33.5 m

94H BOOM COMPOSITION

Boom Length		35 Ft. (10.7 m) 94HT Inner	10 Ft. (3.0 m) 94HT Center	20 Ft. (6.1 m) 94HT Center	50 Ft. (15.2 m) 94S Center	35 Ft. (10.7 m) 94H Outer
Fl.	m.					
70"	21.3	1	0	0	0	1
80"	24.4	1	1	0	0	1
90"	27.4	1	0	1	0	1
100"	30.5	1	1	1	0	1
110"	33.5	1	0	2	0	1
120"	36.6	1	0	0	1	1
130"	39.6	1	1	0	1	1
140"	42.7	1	0	1	1	1
150"	45.7	1	1	1	1	1
160"	48.8	1	0	2	1	1
170"	51.8	1	0	0	2	1
180"	54.9	1	1	0	2	1
190"	57.9	1	0	1	2	1
200"	61.0	1	1	1	2	1
210"	64.0	1	0	2	2	1
220"	67.1	1	0	0	3	1
230"	70.1	1	1	0	3	1
240"	73.2	1	0	1	3	1
250"	76.2	1	1	1	3	1
260"	79.2	1	0	2	3	1
270"	82.3	1	0	0	4	1
280"	85.3	1	1	0	4	1

Designed and rated to comply with ANSI Code B30.5.

NOTE: In accordance with our established policy of constant product improvement and varying material conditions, these specifications are subject to change without notice and without incurring responsibility for machines previously sold.

WEIGHTS

11320 Lifting Crane with "A-B-C-D" counterweight and 70 ft. (21.3 m) basic crane boom:

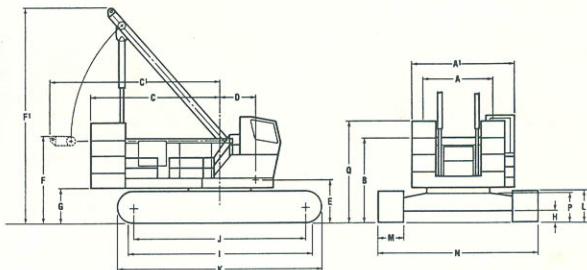
	Lbs.	kg.
50" (1270 mm) shoes	647,800	293840
60" (1524 mm) shoes	656,260	297680
A-B-C-D Counterweight	230,000	104,330
Load line (Est.)	5,000	2270
Crane boom outer	13,000	5900
Crane boom inner	15,770	7150
Telescoping boom stops	1,300	590
Outer bail assembly	2,575	1170
Retractable A-frame	14,510	6580
Upperworks, less A-frame	130,300	59100
LH crawler side frame w/50" (1270 mm) shoes	76,600	34750
RH crawler side frame w/50" (1524 mm) shoes	76,600	34750
Side frame struts (4)	1,620	730
Crawler lower, less side frames and struts	72,900	33070
Crane and Skyhorse hanger block	4,625	2100

GROUND PRESSURE

11320 Lifting Crane with maximum counterweight and 70 ft. (21.3 m) basic boom:

	Lb./ft ²	kPa
50" (1270 mm) shoes	18.1	124.79
60" (1524 mm) shoes	15.3	105.48

MODEL 11320 LIFT CRANE



GENERAL DIMENSIONS

	Ft.	MM		Ft.	MM
A. Width of cab	11'4"	3454.4	I. Crawler bearing length	29'9"	9067.8
A ¹ . Width over counterweight	15'0"	4572	J. Center to center crawler tumpers	28'7/8"	8556.6
B. Height over cab	13'9"	4191	K. Over-all length of crawlers	33'0"	10058.4
C. Tailswing	20'11"	6375.4	L. Height of crawler track	5'2"	1574.8
C ¹ . Tailswing with A-frame lowered	27'4-1/2"	8343.9	M. Width of tread shoes (standard)	50"	1270
D. Center of pivot to center of crane boom foot	5'10"	1778	M ¹ . Width of tread shoes (optional)	60"	1524
E. Ground to center of crane boom foot	7'2"	2184.4	N. Over-all width over crawlers, 50" (1270 mm) shoes	25'11"	7899.4
F. Height over A-frame in retracted position	14'5"	4394.2	N ¹ . Over-all width over crawlers, 60" (1524 mm) shoes	26'9"	8153.4
F ¹ . Height over A-frame in raised position	34'10"	10617.2	P. Ground to bottom of turntable bearing	4'-11-5/8"	1514.4
G. Ground to bottom of counterweight	5'10"	1778	Q. Ground to top of counterweight	16'5-1/2"	5016.5
H. Ground clearance under carbody	1'11"	584.2			